



Outperform every day.™

ENGLISH

# Operator's Manual



## Lettuce King® I 400N, 401N, 402NC, 403N Lettuce King® IV 4400N



Drum Ring shown sold separately.

Thank you for purchasing this Vollrath Food Processing Equipment. Before operating the equipment, read and familiarize yourself with the following operating and safety instructions. **SAVE THESE INSTRUCTIONS FOR FUTURE REFERENCE.** Save the original box and packaging. Use this packaging to ship the equipment if repairs are needed.

REGISTER YOUR PRODUCT ON-LINE AT [WWW.VOLLRATH.COM](http://WWW.VOLLRATH.COM)



- (A) GUIDE RODS. Guides and align the pusher head onto the blade set.
- (B) HANDLE. Used to lower and raise the pusher head.
- (C) LEGS. Supports the equipment.
- (D) PUSHER HEAD ASSEMBLY. Made up of the guides and the pusher head block (and the handle for tabletop models).
- (E) BUMPERS. Cushions the stop of the pusher head.
- (F) SAFETY LOCK HANDLE. Used to secure the pusher head block in the up position.
- (G) BLADE ASSEMBLY. Houses the blades. Specifically sized to match the corresponding pusher head block.
- (H) BASE ASSEMBLY. Holds the guide rods and parts of the equipment.
- (I) LEG SCREWS. Holds the legs in place.
- (J) LOCKING PIN. Secures the pusher head to the handle. Secures the handle assembly to the base. Secures the safety lock to the base.
- (K) SAFETY LOCK ARM. Used to secure the pusher head block in the up position.

## UNPACKING THE EQUIPMENT AND INITIAL SETUP

Carefully remove crating or packaging materials from the equipment. Dispose of all packaging materials in an environmentally responsible manner.

### Leg installation Lettuce King I:

1. Use the screws (A) and washers (B) to install legs (C) tightening with wrench (D). See Figure 3.

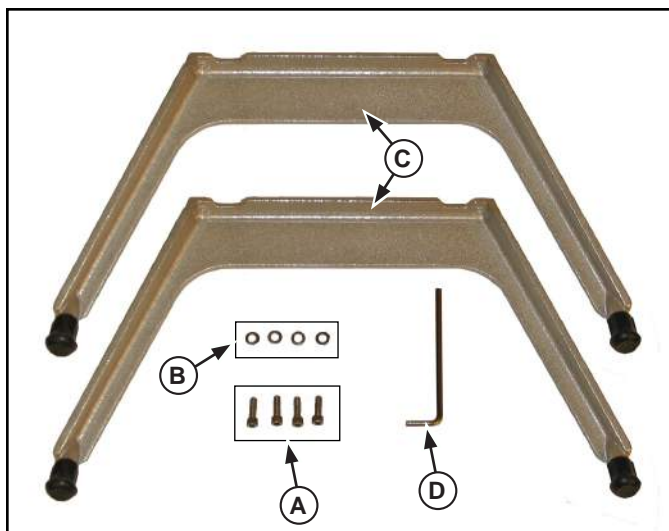


Figure 3. Legs, Hardware and Tool for the Lettuce King I.

2. Secure legs (C) to base (E) using screws (A) and washers (B). See Figure 4.

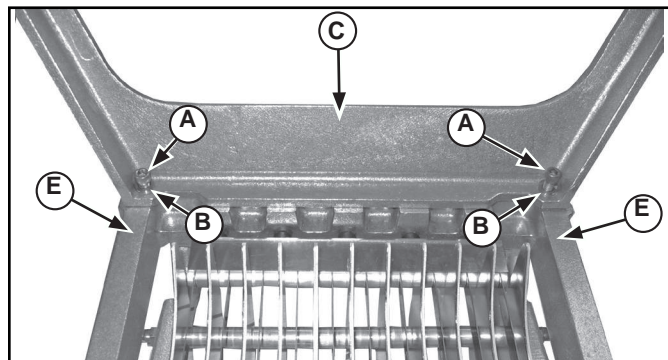


Figure 4. Mounting the Legs on the Lettuce King I.

### Leg installation Lettuce King IV:

1. Use the capscrews (A) and rubber washers (B) to install legs (C). See Figure 5.

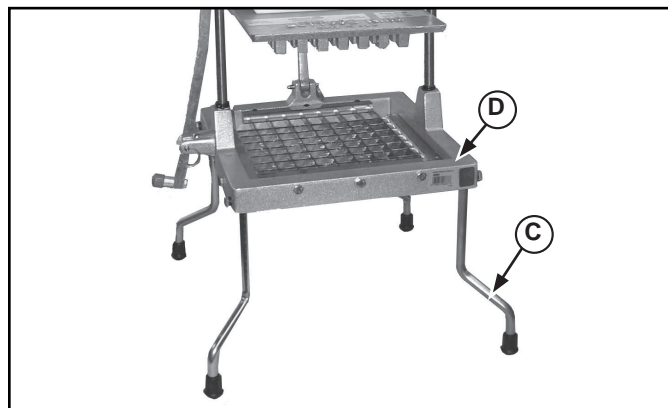
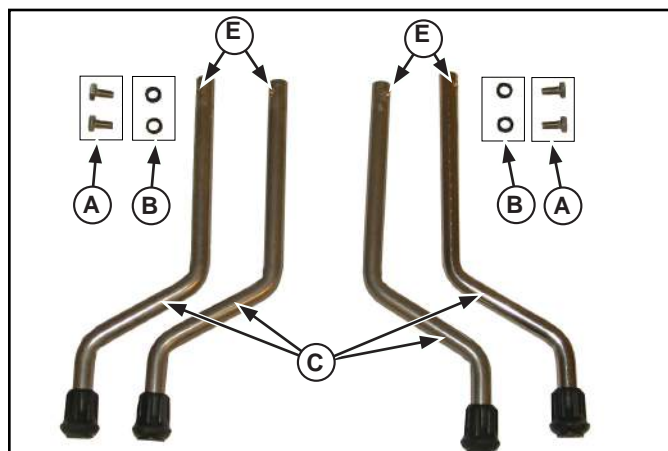
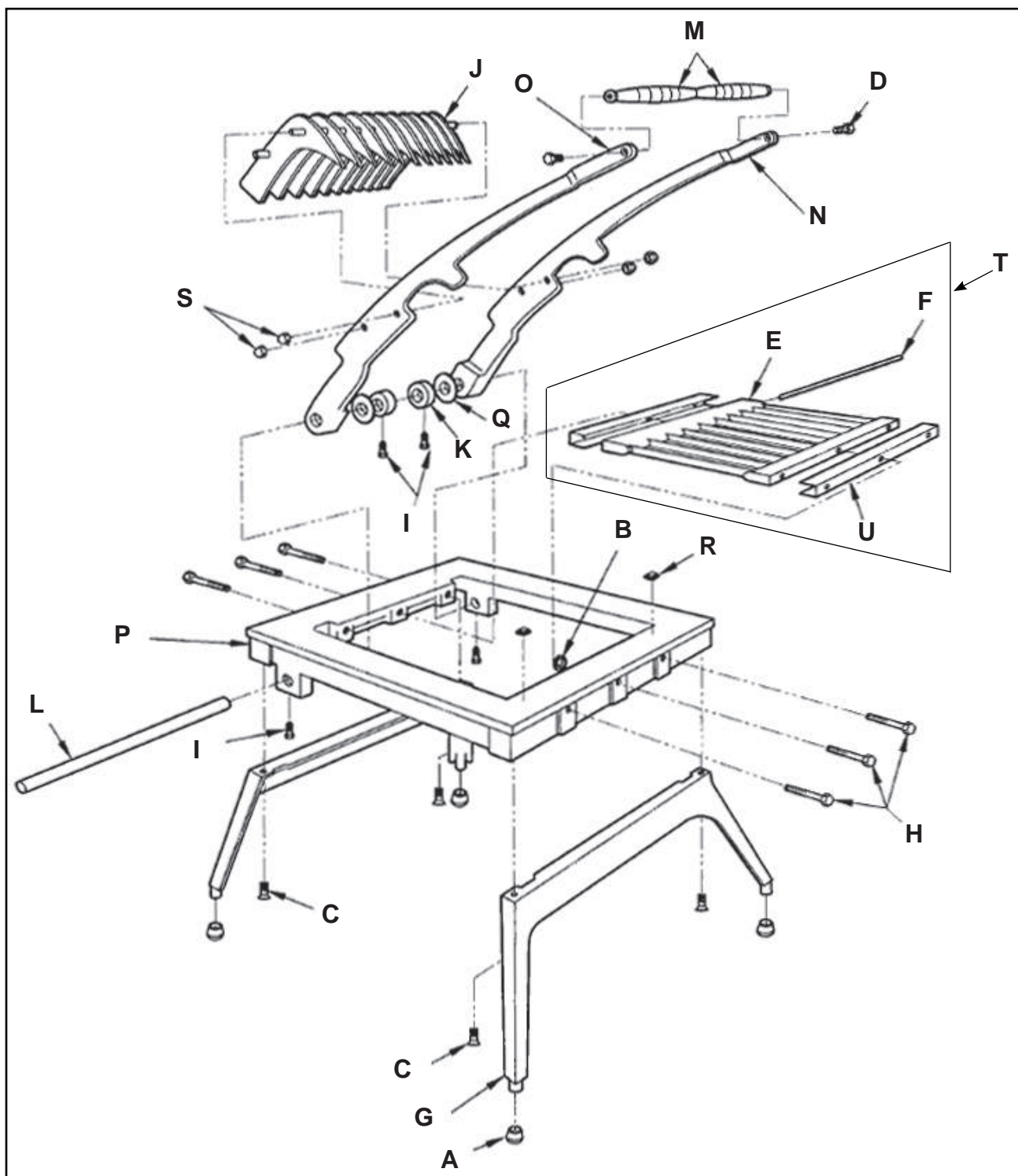


Figure 5. Legs and Hardware for the Lettuce King IV.

2. Set legs (C) into the holes in the base assembly (D) so the angled part of the leg faces outward. See Figure 5.
3. Secure legs (C) to base assembly (D) using capscrews (A) and rubber washers (B). See Figure 5.
4. Tighten capscrews (A) slowly and rotate the legs slightly so that the end of the capscrew (A) enters the notch (E) in the leg (C). See Figure 5.

## SPARE PARTS LIST - LETTUCE KING I

LETTER	PART NUMBER	DESCRIPTION
A	060	RUBBER FOOT (OLD STYLE)
	303	RUBBER FOOT, DEEP (NEW STYLE)
B	0655	RUBBER SEAL
C	414	SCREW FIL. HEAD., 1/4-20 X 3/4"
D	415	SCREW, HEX HEAD., 1/4-20 X 7/8"
E	420	BLADE BLOCK
F	424	BLADE BLOCK PIN
G	426	LEG CASTING, FRONT / REAR
H	427	BLADE BLOCK SCREW, 1/4-20 X 2"
I	4422R	SET SCREW, SQ. HEAD., 1/4-20 X 3/8"
J	379062	PUSHER HEAD 3/16" - (Item 400N) INCLUDES: 4 (0.88 LONG) SPACERS, 74 (0.93 LONG) SPACERS, 38 FINGERS, 2 RETAINING RODS, 4 NUTS
	483	PUSHER HEAD 1/4" - (Item 403N) INCLUDES: 56 SPACERS, 29 FINGERS, 2 RETAINING RODS, 4 NUTS
	482	PUSHER HEAD 3/8" - (Item 402NC) INCLUDES: 38 SPACERS, 20 FINGERS, 2 RETAINING RODS, 4 NUTS
	452	PUSHER HEAD 3/4" - (Item 401N) INCLUDES: 20 SPACERS, 11 FINGERS, 2 RETAINING RODS, 4 NUTS
K	453	PUSHER HEAD LOCKING COLLAR - INCLDS. COLLAR & SCREW
L	454	PUSHER HEAD PIVOT ROD
M	455	PUSHER HEAD HANDLE - INCLDS. HANDLE ROD & 2 PLASTIC GRIPS
N	456	PUSHER HEAD SIDE ARM - RIGHT HAND
O	457	PUSHER HEAD SIDE ARM - LEFT HAND
P	468	BASE ASSEMBLY (CASTING)
Q	490	NYLON WASHER
R	506	PUSHER HEAD BUMPER
S	519	ACORN NUT, 1/4"
T	435	BLADE ASSEMBLY 3/16" - (Item 400N) INCLUDES: 37 BLADES, 2 BLOCKS, 2 PINS, 2 SHIELDS
	485	BLADE ASSEMBLY 1/4" - (Item 403N) INCLUDES: 28 BLADES, 2 BLOCKS, 2 PINS, 2 SHIELDS
	484C	BLADE ASSEMBLY 3/8" - (Item 402NC) INCLUDES: 19 BLADES, 2 BLOCKS, 2 PINS, 2 SHIELDS
	434	BLADE ASSEMBLY 3/4" - (Item 401N) INCLUDES: 10 BLADES, 2 BLOCKS, 2 PINS, 2 SHIELDS
U	N/A	BLADE SHIELD - PART OF BLADE ASSEMBLY
NOT SHOWN	4425	LETTUCE CUTTER BRUSH



**Figure 6. Spare Parts for Lettuce King I**

## SPARE PARTS LIST - LETTUCE KING IV

LETTER	PART NUMBER	DESCRIPTION
A	0658	Rubber Seal
B	303	Rubber Foot
C	305	"O" ring
D	379017	Handle Bracket
E	379018	Leg (new style - do not intermix with old style)
F	379019	Screw, Stainless, Hex, 3/8-24 x 1"
G	379020	Spacer
H	850083	Guide Rod (also part of 4401)
I	4402	Blade Block (also part of blade assy 4408)
J	4403	Blade Pin (also part of blade assy 4408)
K	4404	Pusher Head
L	4405	Head Guide
M	4406	Screw, Hex, 1/4-20 x 4 1/2"
N	4407	Screw, Hex, 1/4-20 x 1 3/8"
O	4409	LEG (old style - do not intermix with new style)
P	4411	Pull Pin with ring, short, 1 1/4"
Q	4412R	Pull Pin with ring, long 1 3/4"
R	4413	Operating Arm Linkage
S	4414R	Operating Handle
T	4416	Safety Pivot Base
U	4417	Safety Latch Assembly
V	4424	Screw, Hex, 1/4-20 x 1/2"
W	4427	Screw, Phillips, 1/4-20 x 1 1/4"
X	N/A	Plastic Cap (also part of 4417)
Y	N/A	Aluminum Stop (also part of 4417)
Z	N/A	Safety Latch (also part of 4417)
AA	N/A	Screw, Hex, 1/4-20 x 1" (also part of 4417)
BB	N/A	Blade Shield (part of blade assy 4408)
CC	4408	Blade Assembly (includes. 2 complete blade assy's w/ shields)
DD	N/A	Single Blade, 1/2" x 9-3/16" (packed 12 per carton) (part of blade assy 4408)
EE	4401	Main frame with guide rods
FF	N/A	Head Guide Link (Not Shown) discontinued, refer to "D")
NOT SHOWN	4425	Lettuce Cutter Brush
NOT SHOWN	2900	Drum Ring (Sold Separately)



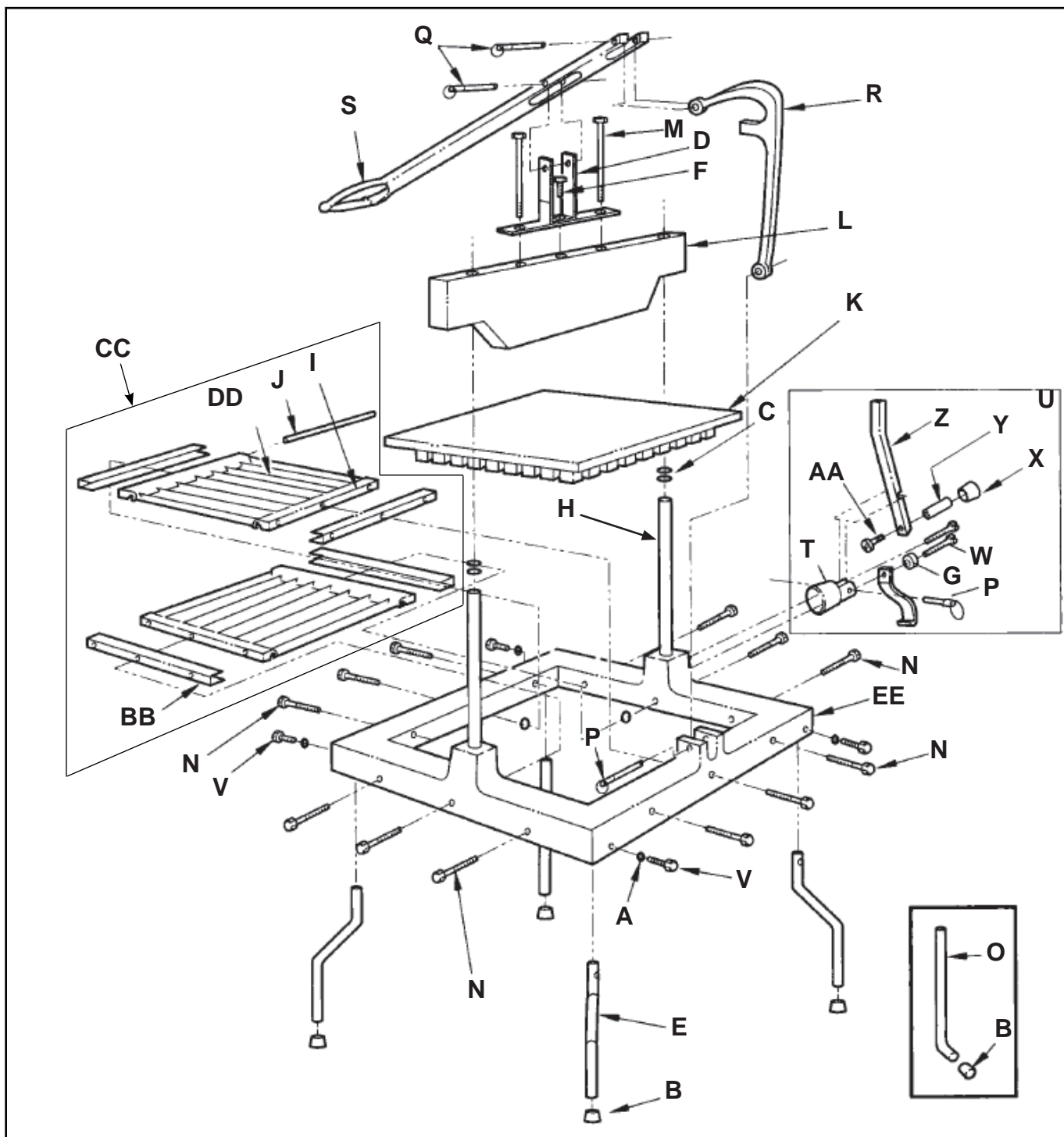


Figure 7. Spare Parts for Lettuce King IV.